

Klamath Rock and Arrowhead club

# DUSTY ROCKS

May  
2013



**ROCK AND ARROWHEAD CLUB**

**P.O. BOX 1803**

**KLAMATH FALLS, OR 97601**

**[www.klamathrockclub.org](http://www.klamathrockclub.org)**

# OFFICERS & EXECUTIVE BOARD

**President:** Laura Limb, 541-273-7503  
1528 Dayton St, Klamath Falls OR, 97603

**Vice Pres:** Doris Newnham, 541-850-0325  
4737 Alva Klamath Falls OR, 97603

**Secretary:** Carol Barrett, 541-891-8440,  
5605 Wocus Ed, Klamath Falls, OR 97601

**Treasurer:** Denise Sebastian, 541-331-1378,  
3423 Altamont Falls, OR 97603

**NFMS Director:** Kathi Milem  
3333 Anderson #3 Klamath Falls, OR  
97603

**NFMS Junior Delegate:** Alyssa Carnes

**Past President:** Jeff Eastburn

**Member @ Large:** Marvin Stump

The club mailing address is:  
PO Box 1803, Klamath Falls OR 97601  
[www.klamathrockclub.org](http://www.klamathrockclub.org)

nicee1214@gmail.com

Meetings are held at the Klamath County Museum Meeting Room – Main & Spring Streets, using the **West** entrance. **Meetings are held on the 2<sup>nd</sup> Monday of each month at 7:00 pm** with the exception of December when we have our Christmas Luncheon and Party and after March's show.

### Visitors are cordially invited:

Dues are \$13.50 per year per adult (\$25 for families plus \$1 per child), \$7.50 ages 16-18.

### General Objectives of the Club:

To promote popular interest, knowledge and understanding in the various earth sciences, as in Geology, Mineralogy, Paleontology and Lapidary and other related subjects. To sponsor and provide means of coordinating the work and efforts of all persons interested therein.

### Helping Others:

The club participates in the NFMS stamp program, saving large commemoratives, airmail, pre-canceled, and foreign stamps of all values. Proceeds from stamp sales will be used to benefit any charity deemed worthy by the NFMS Endowment Fund.

All contents Copyright © 2012-2013 All rights reserved. No part of this document or the related files may be reproduced or transmitted in any form, by any means without the prior permission of the Rock and Arrowhead Club. Permission is hereby given to non-Commercial and not-for profit groups or persons to copy, forward or otherwise share this publication for educational and informational purposes.

## Committee Chairs

Sunshine.....	Chris Chance
Program.....	Doris Newnham
Greeter/Door Prize.....	Sandi Masterson
Refreshment.....	Chris Chance
Historian.....	Don Perryman
Librarian.....	Jessica Limb
Claims Rep.....	Garwin Carlson
Field Trips.....	Marshall Curran
Black Light Display.....	Chuck Newnham
Show Chair.....	Garwin Carlson
Asst Show Chair.....	Marvin Stump
Safety Officer.....	Jeff Eastburn
Publisher/ Webmaster.....	Denise Sebastian

### THE NORTHWEST NEWSLETTER

is published 11 times a year. Copies are sent to each member's household. The cost is included in your annual dues.

Two free copies of the **AFMS NEWSLETTER** are mailed to each member club. Subscriptions are available at \$3.50 for 9 issues. Send payment to:  
American Federation of Mineralogical Societies  
PO Box 26523 Oklahoma City, Ok. 73126.

### We are affiliated with

- Northwest Federation of Mineralogical Societies
- American Federation of Mineralogical Societies

### Newsletter Editor

Rachel Limb:541-273-7503  
Rachel.n.limb@gmail.com

### Visit Us At [www.klamathrockclub.org](http://www.klamathrockclub.org)

Please e-mail [nicee1214@gmail.com](mailto:nicee1214@gmail.com) to get on our email list.

*Reference to use of arrowheads within our club is limited to flint napping activities during workshops, annual shows and personal creations. No gathering of arrowheads on field trips is authorized or suggested by any club members.*

# DUSTY ROCKS

Rock and Arrowhead Club ~ Klamath Falls Oregon



**Table of Contents:**

**Inside Cover P. 2**

**Table of Contents and  
Editor's Note P.3**

**April Meeting  
Minutes P. 4– P. 5**

**Field Trips P.6**

**Calendar P.7**

**Junior Rockhounds  
P.8**

**Members in Action  
P.9**

**President's Note P.10**

**From the Editor....**

Hi. My name is Rachel Limb. I am a senior in high school at Klamath Union. I am the new newsletter editor and also the Junior Rockhound Activities Director. I look forward to making the newsletter readable and relevant. I hope you are all well and thriving.

So... a little about myself. I am 17, blonde, and in 12th grade. I have a dog named Boots. He is a beautiful Border Collie– Labrador mutt. I love animals. I have many hobbies and I am an artist. My nicknames include Hippy, Country, and SWAG sister. I love learning but find repetitive paperwork boring, like most everyone I imagine. I love road trips and am planning on attending SOU in two years.

Another thing I love to do is talk to people. I am a two– year DECA International Career Development Conference participant. I have been a DECA member for all four years of high school and look forward to being an alumni. DECA is an association of Marketing Students. In very simple terms, it is a business club.

Have a skip-dandy day,

Rachel Limb

**NEXT MEETING:**

**June 10**

Klamath Co. Museum

**Refreshments**

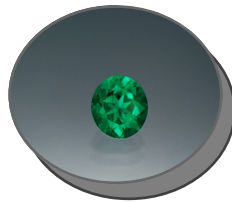
Kathi Milem, Alyssa  
Carnes & Doris  
Newnham

Program:

Sunstone

**May Birthstone**

**EMERALD**



As the birthstone for May, the emerald, a symbol of rebirth, is believed to grant the owner foresight, good fortune, and youth. Emerald, derived from the word smaragdus, meaning green in Greek, was mined in Egypt as early as 330 B.C. Today, most of the world's emeralds are mined in Colombia, Brazil, Afghanistan, and Zambia. The availability of high-quality emerald is limited; consequently, treatments to improve clarity are performed regularly.

Retrieved from <http://www.americangemsociety.org/may-birthstone>

*Happy Birthday*

James Halstead

Leroy Bieler

Allen Hart

Lorraine Kochevar

Sharon Leandors

Michael Zumbrun

Jessica Limb

Coming next month -

Plush Sunstone Trip June 23-24



# APRIL MINUTES

Rock & Arrowhead Club Meeting

April 08, 2013

Minutes by Acting Secretary Carol Barrett



1. Call to order at 7:00 P.M.
2. Pledge of Allegiance.
3. Welcome visitors: Joe Jones & family and Walt Jones & family.
4. Door Prizes: Door prizes were donated by Mike Ward, Marshall Curran, Dr. and Lorraine Kochevar. The door prize winners were Joshua Jones, Walt Jones, Janet Linsenbigler, and Bob Fore.
5. Birthdays: Two donations from prior months none third month.
6. Secretary: Minutes approval from March meeting, Motion by Leroy Bieler and second by Bob Fore. Motion passes.
7. Treasurer Report: Bills paid, balance similar to prior balance.
8. Sunshine Report: Chris Chance asked if anyone knew of anyone not well. It was discussed that Larry Phillips was sorely missed at the Rock & Gem Show and that a letter should be sent to him offering him gas money and telling him how much he was missed and that he would not have to do any side trips next time (picking up a black light). Carol Barrett volunteered to write the letter and Chris Chance and Sandi Masterson volunteered to assist. Chris made a motion that was seconded by Sandi. Motion passed.
9. Webmaster Report: Denise Sebastian is working on ability for members' access. Note: To move frame one page to another without scrolling just click on the page and it will move with arrow.
10. Newsletter Editor Report: Sandi Masterson has found a job locally, but is still looking for a cruise line job, so there is a need for a new volunteer for this role. Members are asked to be thinking about this. Could? Would YOU volunteer?
11. Members' field trips: Laura Limb went to her back yard and made spheres from crazy lace & sodalite. Chris Chance had guests from Oregon City and someplace in Washington to enjoy her rock garden. Marshall Curran was given a lot of rock magazines dated 1998 thru 2009 and a special metal case to display them in. Marshall plans on using them as a research library for the club and hopefully, house them at the museum meeting room for the club members use. Denise will be sending a thank you note to the donator.
12. Executive Board meeting: June 03, 2013 at 6:00 P.M. at IYS.
13. Show Critique Report: Marv Stump and Garwin Carlson talked about the critique meeting. The critique will be available on the clubs Website.

# APRIL MINUTES (CONTINUED)

14. Other: The information for the 2013 field trips will be posted on the Website. The trips are Hampton Butte on the 3-day Memorial weekend, club's sunstone claims late June, Lassen Creek obsidian third weekend in July at Lassen Creek, precious opal fee dig third weekend in August, and other field trips as they are arranged. Jim Curtis, Grants Pass club, was asked to put our club on their 3 year rotation list for a Rhodonite Field Trip. There is a limit of 40 people that can use the rhodonite claim at a time.

It was suggested that our club have a silent auction/tailgate session in the parking lot before one of our summer meetings to help fund Kathy Milem's Northwest Federation trip to the Federation's annual meeting in August. Leroy Bieler said that it would take about \$150 more to complete the electrical cords that the club uses at the annual show. Membership agreed to have Leroy move forward on the project.

15. Program: FIELD TRIP SAFETY by Jeff Eastburn. This was a good topic that was very well done and had excellent recommendations. The high points can be found on the Website.

16. Refreshments were provided by Marshall and Garwin.

17. Meeting adjourned at 8:15 P.M.

18. Next club meeting, MONDAY May 13 ,2013.

**Have you seen the new website yet???**

**Go check it out now!!!**

**[www.klamathrockclub.org](http://www.klamathrockclub.org)**

**Find club information, trip information, rock information, and much more!**



# THIS MONTH'S FIELD TRIP

## Hampton Butte, Oregon

This month's trip is in **Hampton Butte**. We are after some **green, red, and yellow petrified wood**.

This trip will take place over **memorial day weekend on May 25-27**.

Please do not forget (**Necessary packing list**):

Water      Shovel      Hat      Gloves      Spare tire      Sunscreen

Please also check the weather before the trip. Be prepared for anything from rain to really hot weather. Also check the website in case of any changes in plans.

**There is a by-pass around Bend for those of you who don't want to drive into Bend.**

South of Bend, take the **Baker Road/ Knott Road exit**.

Turn right on **Knott Road** and this will take you around the east side of Bend, and connect you to **Highway 20**.

Turn right (**east**) onto **Highway 20**. Gas stations, restaurants, etc., are located in this area.

### Directions from Bend

Go **east** on **High-way 20**, 52 miles.

Just past milepost 52, turn left (**northeast**) on to **Van Lake Road**. (Milepost 52 is approximately 2 Miles past Brother).

Go Approximately 11 Miles and turn **east** on **Price - twelvemile Rd**.

Go **east** about 2.2 miles to the collection site and campground.

The route will be marked with signs saying **RAC** on them.

### This year's remaining field trips:

June 22-23 Plush Sunstone Trip

July 20-21 Lassen Creek and Obsidian

August 20-21 Virgin Valley Opals

September Gold Panning &

Juniper Ridge Fire Opals





# May 2013

Sun      Mon      Tue      Wed      Thu      Fri      Sat

			1	2	3	4
5	6	7	8	9	10	11
12	13 RAC Meeting	14	15	16	17	18
19	20	21	22	23	24	25 Hamp
26 ton	27 Butte	28	29	30	31	

*Want to make an addition to the newsletter?*

*CONTACT RACHEL LIMB BEFORE THE 20TH OF THE MONTH. PLEASE DON'T SUBMIT ANYTHING LARGER THAN 1/2 A PAGE UNLESS THERE ARE NEGOTIATIONS.*





Klamath Rock and Arrowhead club

# JUNIOR ROCK HOUNDS

OF THE KLAMATH ROCK AND AR-  
ROWHEAD CLUB

During the may meeting we will be learning about **gold and gold panning**. This will also be the subject of next month's meeting, when we will have an experienced gold- panner teach us how to find gold and how to pan for it.

**Parents**, please encourage your children to attend the Junior Rockhounding session. We cannot have a club without any members.

For those of you **eighteen and under**, we appreciate your participation and ask that you consider attending to mentor the younger and less experienced members.



# MEMBERS IN ACTION



In the future this space will be reserved for a show and tell section about what the RAC members have been doing in the past month. PLEASE submit any photos or activity descriptions related to your rock hounding adventures and discoveries.



# FROM THE PRESIDENT



Hello Fellow Rockhounds,

With summer fast approaching, I hope that each of you are planning a few exciting rock picking adventures. The club will attempt to have at least one field trip a month as a group event. We will have a silent auction at each one that will help pay for our Federation President, Kathi Milem, expenses to Montana for the Federation meeting.

I would like to encourage you to bring your rocks or creations to the monthly club meetings for Gallery viewing. We will also have a silent auction at the meetings to assist in paying for expenses on our field trips, like a port a potty when needed.

Happy rockhounding and field tripping. As always, be safe.

Laura Limb

## Rockhounding Terms

### Leaverite

A word used by mineral collectors in the field when they find a specimen that is not worth taking home.

“That’s a lousy specimen. Don’t take it home . . . leaverite where you found it!”

### Hardness

A measure of the resistance of a mineral to being scratched by another mineral. Mineral hardness is measured on a scale from 1 to 10 with 1 being the softest and 10 the hardest. This scale of hardness is known as Mohs’ Hardness Scale. The minerals on the Hardness Scale are 1. Talc, 2. Gypsum, 3. Calcite, 4. Fluorite, 5. Apatite, 6. Orthoclase Feldspar, 7. Quartz, 8. Topaz, 9. Corundum, 10. Diamond. The hardness scale was developed by the German mineralogist Carl Friedrich Christian Mohs (January 29, 1773 – September 29, 1839). Right: Friedrich Mohs, public domain. rockhounds page

Information used with permission from Diamond Dan publications. For more free kids pages and rock information visit

[www.diamonddanpublications.net](http://www.diamonddanpublications.net)

### Cleavage

A description of the way some minerals break on flat surfaces. Types of cleavage include pinacoidal, cubic, octahedral, dodecahedral, rhombohedral and prismatic.

