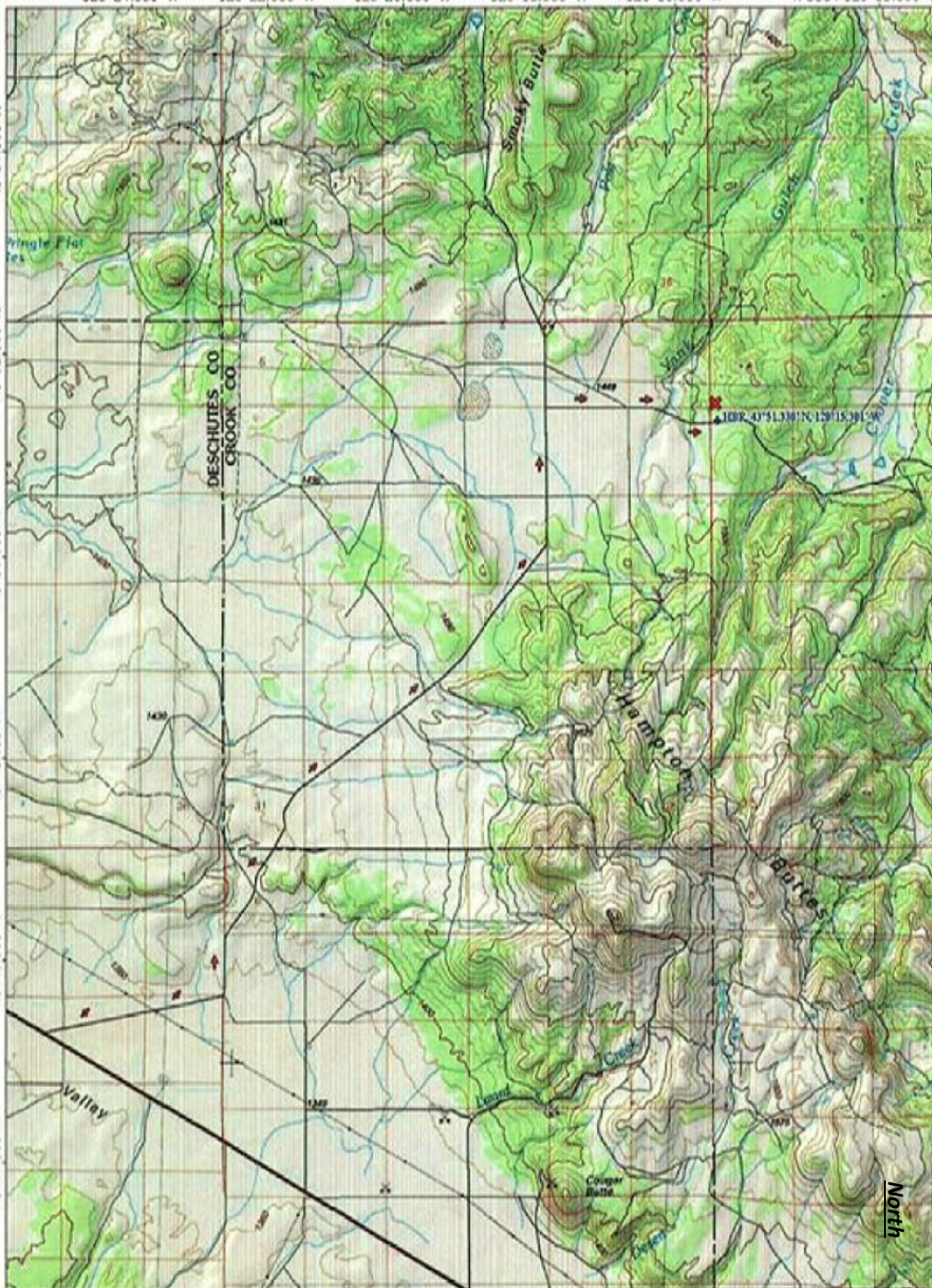


Klamath Rock and Arrowhead Club

Hampton Butte Petrified Wood



From Bend go east on Highway 20, 52 miles. Just past milepost 52, turn left (northeast) on to Van Lake Road. (Milepost 52 is approximately 2 Miles past Brother).

Go Approximately 11 Miles and turn east on Pricetwelve Rd.

Go east about 2.2 miles to the collection site and campground.

The route will be marked with signs saying RAC on them.

There is a by-pass around Bend for those of you who don't want to drive into Bend. South of Bend, take the Baker Road/Knott Road exit. Turn right on Knott Road and this will take you around the east side of Bend, and connect you to Highway 20. Turn right (east) onto Highway 20. Gas stations, restaurants, etc., are located in this area.